

Los Feliz Observer

Organized in 1916 for the betterment and protection of the Los Feliz District

WINTER 2006

MASTER PLAN UPDATE

Citizens Reject Paving Griffith Park as Officials Pave Way for New Development

By Chuck Soter, LFIA Parks Committee Chair

For those who may have just joined us, let me begin with a recap of a situation that is of vital importance to our community. Nine months ago, the City quietly released a new vision for Griffith Park that was greeted with some dismay. Instead of preserving the Park's natural and authentic features, the draft of the new Master Plan for Griffith Park called for the Park to "reach its full potential" by re-inventing it into a giant rec center/entertainment complex filled with new developments and commercial schemes. After crushingly negative feedback, the City convened a citizen's advisory panel, the Draft Master Plan Working Group, to remake the

document. The public process now in place is being helped along by a coalition called "Save Griffith Park," which is circulating the Griffith Park Urban Wilderness Petition conceived and launched by the LFIA. The petition directs the City to recognize and protect the Park's "remaining open, undeveloped and natural spaces" and preserve "its unique historic identity." Since July, more than 7500 residents from more than 90 zip codes in the City proper, (not to mention far flung areas throughout



Fern Dell photo Kathryn Louyse

the County), have signed on with gusto.

Heeding the Public Will

At the October 11, 2005 Working Group Meeting, the panel unveiled a new Vision for Griffith Park that replaces the draft's present vision chapter with principles that reflect the community's desires.

continued on page 6

No Supermarket Under the Hat

Story on page 4



Willard's Car Cafe photo and postcard courtesy of the L.A. Conservancy collection.

INSIDE...

page 3 The President's Column

page 4 Derby Controversy

page 5 Immaculate Heart HS Celebrates a Century

page 7 New Griffith Park Visitor Center Opens

page 9 Norman Mennes Memories

page 10 John Marshall HS Turns 75

page 11 Upcoming Photo Day on Jan. 29th

page 12 The Breakfast Club Lives

page 17 Los Feliz Profile

Los Feliz at 100 in 2016:

Best Case Scenarios

By Mike Lyons

"Quarter of a century' makes a girl think!" In their classic comedy, *Some Like It Hot*, Billy Wilder and I.A.L. Diamond put those words in the mouth of Marilyn Monroe's Sugar Kowalski as she contemplated her 25th birthday.

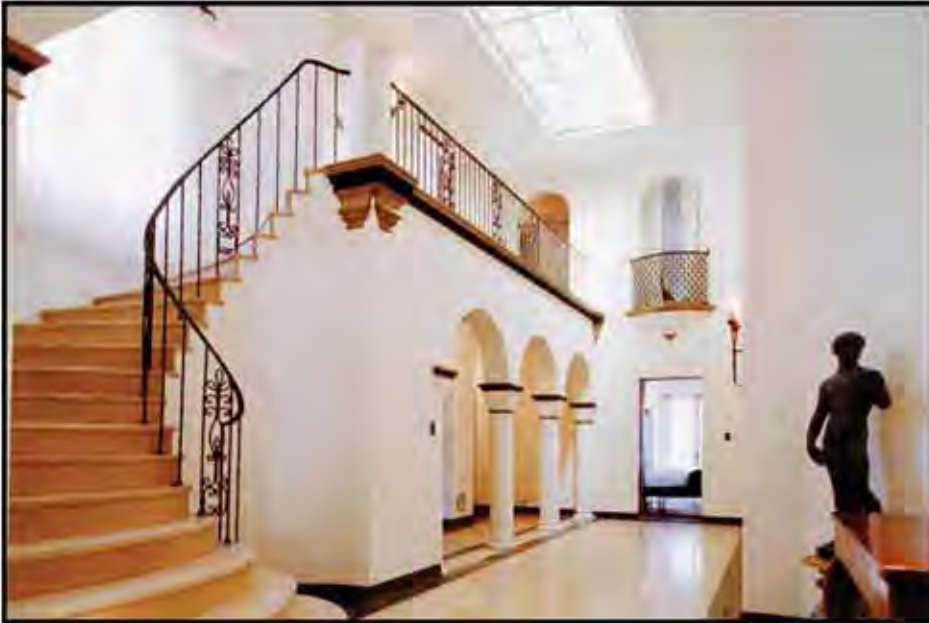
This year the Los Feliz Improvement Association turns 90 years old and it finds itself contemplating what our neighborhood will be like in 10 years when it will have been in existence for a full century. We asked our committee heads to imagine the brightest tomorrow.

continued on page 8

BARRY SLOANE

SELLING THE TROPHY PROPERTIES OF LOS FELIZ

► *Establishing the 2 Highest Residential Sales Prices Ever in Los Feliz!* ◀



SOLD

**2267 Chislehurst Drive
Asking Price \$5,900,000**

Spectacular large 1927 Italian compound with pool, spa and amazing city views. This imposing estate has remarkably large square footage and a grand, sprawling floorplan designed in a dazzling combination of Italianate and Spanish styles. The public rooms are of diplomatic proportions with library, music room, minstrel gallery, 7 bedrooms, huge staff wing, theater, gym, pool.



SOLD

**4519 Cockerham Avenue
Asking Price \$5,900,000**

"Los Pavoreales", 1927. Wallace Neff's Spanish masterpiece on almost two acres of private, gated lush grounds. Legendary for its superb theatrical scale and proportion, and also its stellar list of owners. One of the most regal and stately homes in Los Angeles with its classic Moorish axis of grand public rooms and recently expanded, 4 bedrooms, oversized guest house, state of the art multi-camera security.



Sotheby's
INTERNATIONAL REALTY

BARRY SLOANE

Historic and Architecturally Significant
Properties

(310) 786-1844

barry.sloane@sothebysrealty.com

Winter 2006

The *Los Feliz Observer* is published by the Los Feliz Improvement Association

Editor Lynne T. Jewell

Executive Editor Charlotte De Armond

Photo Editor Marian Dodge

Editorial Associates Marilyn Bush, Chris

Laib, Mike Lyons, Rulon Openshaw, Don

Snyder, Chuck Soter, Valerie Vanaman

Advertising Director Terry Hughes

Graphic Design Kathryn Louyse

LFIA Purpose

The Los Feliz Improvement Association was formed in 1916 to further the interests of the Los Feliz district of Los Angeles, its residents and property owners, and to undertake any activity that in the opinion of the Board of Directors will be beneficial to the district, its residents or property owners.

LFIA Board of Directors

Donna Zenor, *President*

Charlotte De Armond, *Chairman*

Juliet Kiperman, *1st Vice President*

Mike Lyons, *2nd Vice President*

Margie Bird, *Recording Secretary*

Virgil McDowell,

Corresponding Secretary

Terry Hughes, *Treasurer*

George Abrahamian Rulon Openshaw

Tricia Bergounoux David Roberti

Sandra Collier Patricia Ruben

Dennis Chew Abby Sherman

Marian Dodge Mary Beth Sorenson

Krishna Gangadean Angela Stewart

Margaret Goldsmith June Teal

Noah Graff Valerie Vanaman

Lynne T. Jewell Michael Willard

Chris Laib Denise Wingate

Melissa Linn Margaret Lohfeld

Virgil McDowell Norman Mennes

Los Feliz Improvement Association

Post Office Box 29395

Los Angeles, CA 90029

Telephone & Fax 323.660.1914

website:

www.lfia.org

The *Los Feliz Observer* is published quarterly and is one of the benefits of membership in the Los Feliz Improvement Association (LFIA), a non-profit corporation that is tax-exempt under 501(C)(4) of the Internal Revenue code.

Membership dues are \$30.00 annually.



Everyone Should Have a Thing

The year 2006 marks some significant anniversaries. John Marshall High School celebrates its 75th year. The Breakfast Club of Los Feliz just celebrated its 80th birthday. Immaculate Heart has been enriching the lives of its students for 100 years!

But the anniversary I am happiest to invite you to celebrate is the 90th year of the existence of the Los Feliz Improvement Association. Do you find Los Feliz a beautiful place to live? I can tell you with certainty that this beauty has been fought for and conserved with great, deliberate effort by your homeowner,s association. If you know the workings of city government, then you know that nothing beautiful happens by accident. If anything, our current battle with the misbegotten Griffith Park Master Plan demonstrates that nothing beautiful is allowed to remain in existence without a fierce determination to preserve it.

“The anniversary I am happiest to invite you to celebrate is the 90th year of the existence of the Los Feliz Improvement Association.”

Elsewhere in this issue you will find a wonderfully optimistic article about our future. We asked our hard-working committee heads to imagine best case scenarios of what Los Feliz could be in ten years, when we turn one hundred. Read their responses closely. I'm certain your fondest hopes for Los Feliz are expressed there, too.

But for just a moment, I want you imagine the worst possibilities: permanent traffic gridlock on our streets, rampant commercial development that overwhelms any sense of neighborhood, schools with the lowest of academic standards, and a once magnificent park bulldozed into endless concrete "attractions" by a city that has no concept of the value of open space.

I have been told by a disconcerting number of incredibly intelligent people who have become residents of Los Feliz over the last several years, when asked if they are members of LFIA, that "it's just not our thing." Hello! With or without their interest or support LFIA will continue to fight the good fight on your and their behalf. And I can assure you that we have heard loud and clear from our membership that the continuation of that fight is incredibly important in so many areas.

LFIA is identified as one of the most outspoken advocates against political cronyism, horse-trading and self-aggrandizement in the City of Los Angeles, on behalf not only of residents of Los Feliz but of citizens of Los Angeles generally. What we need you to do is support us. Come to the general meetings, become part of a committee, and join or renew your membership in the LFIA.

We also ask that you make every effort to expand our membership by educating your neighbors who are not currently members as to the importance of what you and we are doing to promote, preserve and protect the values this unique community represents. Make it "your thing."

No Supermarket Under the Hat

By Lynne T. Jewell

There will be no supermarket located at the controversial corner of Hillhurst Avenue and Los Feliz Boulevard, according to the developers who own the property now called Hillhurst Square.

The fate of the Brown Derby remains to be seen.

At a Greater Griffith Park Neighborhood Council-sponsored meeting in November, Richard Gable of Adler Realty told an often-angry crowd of nearly 500 that the next plan would most likely not include a grocery store and would look at ways to preserve the existing structure.

He and his colleagues went on to explain that the proposed mixed-used project would include 80 condos totaling 100,000 square feet above retail at street level. The design of the three to four story building would be the "traditional California Spanish-Colonial." Although the project is, as the developers say, "a work in progress" and still in the early stages. The developers would like to start year-long construction in 2008, however, no zoning variances requests have been submitted which the project would require.

Several days following the community meeting, the GGPNC board unanimously adopted a motion opposing the proposed development plans for the five parcels and supported preservation of the 1929 building which once housed a Brown Derby.

At the public forum, Donna Zenor, president of LFIA, told the standing-room-only audience at Our Mother of Good Council Church's auditorium, that the proposed project is "massive and inappropriate for the site" and that as it stands, it is "unacceptable to LFIA."

She received cheers when she said, "Los Feliz Boulevard with its historically significant deodar

cedars planted and nurtured by LFIA, serves as a gracious and beautiful statement of the aesthetics of the Los Feliz community. LFIA will not support any project which undermines that statement."

Traffic congestion along Los Feliz Boulevard was the hottest topic of discussion along with the Brown



Courtesy of L.A. Conservancy

The Willard's Car Drive-In.

Derby and whether it will be saved from the wrecking ball. The Los Feliz nightclub is the last of the five Derbys built in Los Angeles.

The current building at 4500 Los Feliz Boulevard was originally built in the late 1920s by J.E. Hennessey as Willard's Chicken Inn and has been home to numerous restaurants over the past 70 years. With a Hollywood western theme, it was the fourth Brown Derby restaurant in the 1940s and 1950s. Then it became Michael's for the next 20 years. In 1993, the owners divided the building into two spaces, The Derby and Louise's Trattoria.

More information on this issue can be found on the following websites: www.ggpnc.org, www.SaveTheDerby.com and www.Adler-Realty.com.

Observatory Update

By Charlotte De Armond

As we go to press, construction work on the Griffith Observatory renovation is continuing, with the major work expected to be completed in mid- or late January 2006. First work on installation of the new exhibit program began in December, with full crews scheduled to arrive after the holidays.

Following up on input received from the three community meetings held to consider how best to accommodate the thousands of people who are expected to visit the renovated Observatory, the Department of Recreation and Parks (RAP)

reports that it has now prepared Requests for Proposals for a timed entry reservation ticketing provider and for shuttle and bus operators.

The Board of Commissioners approved the RFPs at their December 14, 2005, meeting. Following review by the City Attorney, RAP staff is projecting a January release of the RFPs. The process of issuing the RFPs, review of the responses, and selection of the concessionaires could take about six months

As long-planned aspects of the Observatory renovation and expansion project are coming near to completion, excitement is building among project managers, Observatory staff, and Friends of the

Observatory. For example, the interior dome, new seats, and the new Zeiss star projector are already installed in the Samuel Oschin Planetarium theater, and the overall effect of the room exceeds all expectations. The first segments of animation for the new planetarium show are simply awe-inspiring.

The re-opening date, now projected for sometime after Labor Day in 2006, has not yet been set, but should be announced after the City can confirm key progress milestones such as completion of construction and advertising for the RFPs for the timed reservations and shuttles.



Photos courtesy of Immaculate Heart High School Archives

Immaculate Heart H.S. Celebrates 100th Anniversary

By Rulon Openshaw

Centennial: a one hundred year anniversary. By any human standard, this is a measure of endurance and longevity that is achieved so infrequently that its attainment deserves recognition and congratulation. In May, 2006, Immaculate Heart High School, a Los Feliz institution revered for its contributions to education and community service will celebrate this important milestone.

Los Feliz in 1906 was a bucolic community composed primarily of orange and olive groves, and Los Feliz Road – not yet a boulevard – was still an unpaved dirt thoroughfare. To many, a fifteen acre mustard field at the intersection of Western and Franklin Avenues must have seemed an incongruous choice for an institution of higher learning. Nevertheless, the Sisters of the Immaculate Heart of Mary, pioneers of Catholic secondary education in Southern California, responded affirmatively when Bishop Thomas Conaty requested that they establish a college for women, to be known as Immaculate Heart College, at the site.

On April 24, 1905, groundbreaking took place for a college and convent for the sisters. The following year the high school department of Immaculate Heart Academy on West Pico Boulevard was transferred to the Western and Franklin location and Immaculate Heart High School was born. In June of 1906, the high school held its first commencement. The graduation class consisted of six students.

For 100 years, Immaculate Heart High School has been unwavering in its mission to provide young women with a superb education – academically, morally, and spiritually. Immaculate Heart was placed on the accredited list of the University of California in 1908 – the first private school to receive this distinction – earn



ing an “A” rating which has been consistently maintained. While continuing to teach the traditional subjects – English, Latin, history, mathematics, and religion – the school has kept pace with the demands placed on graduates by the modern world by offering classes in such diverse contemporary fields as computer programming and desktop publishing as well as marine biology and international relations.

Since its founding, Immaculate Heart High School has sent approximately 10,000 women into the world. Its alumnae have studied at universities around the globe and contributed their talents in the fields of medicine, law, business, science, education, and the arts. Their accomplishments and service to the community stand as a testimonial to the dedication of the teachers and staff who taught them.

Today there are 720 young women attending Immaculate Heart’s high school and middle school, which is directed by President Sister Ruth Anne Murray. The Class of 2006, which graduates during the centennial festivities in May, has 130 students. To all members of the Immaculate Heart family, we congratulate you on your 100 years.

Openshaw’s sisters graduated from Immaculate Heart, Nonnie, Class of 1968 and Mary, Class of 1974.

Here is an excerpt:

**Vision for Griffith Park:
An Urban Wilderness Identity**

Griffith Park is a natural refuge surrounded by an intense urban environment. It is characterized by extensive open space that evokes the natural heritage of California, as well as the physical and cultural history of Los Angeles. While a diversity of uses will be accommodated within the Park, the primary management principle for this Park will be to preserve and restore natural resources and ecosystems and enhance the Park's natural qualities.

Griffith Park is a natural refuge surrounded by an intense urban environment.

It is characterized by extensive open space that evokes the natural heritage of California, as well as the physical and cultural history of Los Angeles.

This governing management principle will establish a unique Urban Wilderness identity for Griffith Park, one which fosters a visitor experience that is apart from urban infringements.

The Park will remain an oasis in our urban environment. The majority of the Park will continue to be comprised of naturally hilly terrain with the native southern California chaparral landscape that serves as a habitat for native wildlife

communities. Trails for hikers and equestrians will continue to wind through the hills and flats, taking care to minimize impacts on the protected natural systems. The natural watershed, including the Los Angeles River, will be a key element of the Park's sustainable infrastructure system. Environmentally sensitive and responsible practices incorporated throughout the Park will demonstrate to Park visitors

the many ways we can operate in harmony with the natural world.

The text goes on to direct the City to view the Park's programs, facilities and other usages through the prism of its Urban Wilderness identity. It requires the Recreation & Parks Department (RAP) to preserve the Park's historic features and continue to provide for informal recreation. It instructs them to reclaim the Head-works area and Toyon Canyon Landfill as natural spaces and, although current usages are not affected, rules out additional facilities and new activities that will encroach on the natural Park. Most importantly, the new vision provides a foundation for the remaking of the draft document into a plan that will preserve, not end, Griffith Park as we know it. To read the entire Vision Chapter, go to www.lfia.org

Official Maneuvering Continues

Last June, at the LFIA's General Meeting dedicated to the Griffith Park Master Plan, the panel emphasized that the draft was based on many false assumptions and fictional needs. Among them were the needs for revenue enhancement and making the Park more accessible. Citing revenue enhancement, the draft recommends destination restaurants, a hotel and a variety of public-private partnerships. The LFIA panel challenged RAP to prove that Griffith Park needed to make money. No answer was forthcoming; and even now, whenever questioned by the LFIA or the Working Group about its finances, particularly as they pertain to Griffith Park, RAP's responses are vague and evasive.

Citing user accessibility, the draft recommends six multi-level parking structures so that more visitors and cars can be accommodated; in the very same document, the draft acknowledges that Park visitors (over 10 million annually) are already wearing out the infrastructure and natural environment. When questioned whether money wouldn't better be spent creating more parks for the inner city where,

according to the Trust for Public Land, "nearly 67 percent of the kids in Los Angeles do not live within walking distance of a park, ball-field, or playground," we received no rational answers – only an accusation of NIMBYism. When we asked RAP for the real statistics on cars that are actually turned away from Griffith Park, we finally got a real answer. An employee intimately familiar with parking said that Griffith Park averages ten automobile closures per year, with the average length of time being one to two hours – meaning that cars are turned away about fifteen hours a year. Yet the draft calls for six multi-level parking structures to alleviate this non-problem.

So we ask ourselves again and again, why this need for parking structures? The answer may lie in City Controller Laura Chick's November audit of the Recreation & Parks Department. The Department proudly points to the \$2 million it generates each year at its multi-level parking structure under Pershing Square in downtown L.A. (millions that were pooling for a purpose unknown until their discovery by the City Controller's audit). Every proposed Griffith Park parking structure would obliterate an existing surface lot where visitors now park for free. So in effect, by charging for parking, the City would begin levying a fee to use Griffith Park. What's more, we the people, will finance the multi-million dollar parking structures and then pay to staff, police, power and maintain them. This may sound far-fetched, but consider that in October, RAP replaced Griffith Park's senior management with a new superintendent among whose marquee accomplishments was devising the plan that turned the Pershing Square parking structure into a cash cow for RAP. Simultaneously, in a textbook case of gerrymandering, Griffith Park – the City's wildest Park – was suddenly lumped with distant Pershing Square – the City's all concrete Park – into a new "Griffith Region," a region that leap-frogs much closer continued on next page

New Visitor Center in Griffith Park Features Illuminated Trail Map

The lobby of the Ranger Station in Griffith Park has been transformed into a state-of-the-art Visitor Center highlighting the park's history, landmarks, attractions, and recreational diversity.

The Visitor Center is located in the Spanish-style Ranger Headquarters at 4730 Crystal Springs Drive, at the intersection where you turn to go to the merry-go-round. It is open from 7 a.m. to 9 p.m. seven days a week.

"Stop in and visit us!" said Ranger Anne Waisgerber, who orchestrated the Visitor Center project.

Park patrons are greeted with a video welcome message from Griffith Van Griffith, great-grandson of the park's benefactor, Colonel Griffith J. Griffith.

Dominating the center of the room is an illuminated 3-D interactive fiber optic topographical relief map indicating the 54-miles of trails and points of interest in the park. Special exhibits identify the various animals, birds, and plants found in the park.

A beautiful Welcome Wall with color photos taken by Project Coordinator, Marie-Claire Sallaberry, highlights the special features in the park.

Another wall illustrates the history of the park and Col. Griffith's legacy. A gift shop will open in the future. "We are also in the process of creating new brochures about the park," said Ranger Waisgerber.

Funding for the \$250,000 project was provided by the Griffith J. Griffith Trust. Universal Exhibits of South El Monte worked with the Griffith Park Visitor Center committee members and Griffith Trustees to design and build the center. The building and restrooms were refurbished by the Department of Recreation and Parks. The dedication ceremony on September 22 was attended by members of the Griffith family, Griffith



Top photo Ranger Anne Waisgerber celebrates opening of the Visitor Center at the Griffith Park Ranger Station with (left to right) Mark Mariscal of Recreation and Parks, Griffith Van Griffith, Marie-Claire Sallaberry and former ranger David Feliz.

Bottom photo Visitors to the new center check out one of the updated Griffith Park maps.

Trustees, Recreation and Parks managers, current and retired park rangers and community members. Councilmember Tom LaBonge and Van Griffith cut the ribbon officially opening the center.

For more information call 1-888-LA-PARKS or visit www.laparks.org.

continued from page 6

Griffith Park, the city's wildest park, was suddenly lumped with Pershing Square, the city's all-concrete park...

and more logical administrative fits like semi-wild Elysian Park.

So whose needs will be served by RAP's new administrative camel? Who will benefit from the current Griffith

Park Master Plan draft's push to "pave paradise and put up a parking lot(s)?" Certainly not the citizens of Los Angeles. Officials may continue to argue that what L.A.'s last great natural and open space needs is parking structures, and plenty of them. But you do the math. Connect the dots. Then make your opinions known.

Note:

Saving Griffith Park will continue to require the sustained and concerted effort of LFIA members. I urge readers to attend the monthly Working Group meetings at the

Ranger Station in Griffith Park, speak out during public comment and express support for the LFIA's representative, boardmember, Valerie Vanaman. Also, visit the web site www.savegriffithpark.org for a listing of elected officials to whom you can write about the current draft. Meeting dates and links to the plan can be found there, as well as the *Griffith Park Urban Wilderness Petition* which, thanks to the skilled leadership of LFIA Boardmember, Marian Dodge, is meeting with success.

In 2016, Los Feliz will be the safest community in all of Los Angeles. Newly formed Neighborhood Watch programs will have brought our crime rate to a record low. Our success will have been achieved because we are a neighborhood that cares for and watches out for one another.

~ Rulon Openshaw, Chair, Police/Fire/Safety Committee

To know the history of Los Feliz is to recognize a remarkable continuity to our struggles. Since the 1920s, commercial development has always threatened the park-like qualities of the residences along Los Feliz Blvd. But LFIA exists to keep fighting to preserve the beauty of our neighborhood. By 2016, I want us to have a least one area designated a historic district that protects it from the relentless proliferation of McMansions.

~ Marian Dodge, History Committee

In 10 years, the single most important issue facing our neighborhood public schools will be to implement a traditional school calendar. We hope that the current year-round, multi-track calendar that exists at King Middle School and Marshall High School will no longer be necessary as new schools are built. We would like our local schools to continually strive for clean, safe and beautifully landscaped campuses by encouraging strong community support and involvement. We look forward to welcoming the Los Feliz Charter School for the Arts as they enroll our neighborhood children. And it is our hope that the gifted magnet and Advanced Studies programs at King and Marshall, along with several specialized Academies at Marshall, will continue to be academically sound, successful programs. To ensure this, the schools committee continues to work diligently with our School Board member, administrators, and others to make sure new schools are built and that existing programs stay strong and viable options for our community's children.

~ Mary Beth Sorenson, Schools Committee



LFIA at 100 Best Case Scenarios

If there is one thing we've all learned, the healthiest neighborhoods are the ones where people care and get involved. In 2016, I hope to love Los Feliz even more than I do today because of the commitment of the people who live here. In 2016, every household will be a member of LFIA and will gladly invest time in keeping Los Feliz safe and beautiful.

~ Denise Wingate, Membership Committee

No graffiti. No trash in the LA River. The deodar cedar trees that we've planted along Los Feliz Blvd. will become a gracious canopy to shade our homes and make the air smell sweet.

~ Margaret Lohfeld, Beautification Committee

In 2016, Griffith Park will truly be the haven it once was, protected by its status as an "Urban Wilderness." Fern Dell and the Bird Sanctuary will once again feature running water and lush, restful flora. The Toyon landfill will have been reseeded to blend in with its surrounding area, and the Headworks near Traveltown will have become a riparian landscape. The tunnel to the Equestrian Center and a new bridge to the Atwater stables will provide safe horse access across the Los Angeles River. Finally, the Park will be connected by more frequent public transportation to subway and Metrolink stops, and secure bicycle racks will be available so that more visitors can use the Park without having to drive there.

~ Chuck Soter, Parks Committee

In 2016, I want everything that we love about Los Feliz to still be here. I want to see open green spaces that have always defined our town as the gateway to Griffith Park, Los

Angeles's great, green playground. I want to see streets that allow residents a place to park because commercial development hasn't been allowed to overwhelm the quality of our lives. This doesn't mean I'm opposed to commercial development, but it needs to be appropriate and beneficial to us. And I'd dearly love to see all those horrible, oversized walls and hedges come down. They kill the spirit of connection and neighborliness. Los Angeles can be an impersonal place, but we have something lovely and real here. In ten years I want to walk down our streets and still feel the sense of loveliness that I feel now.

~ Juliet Kiperman, Zoning Committee

Was there ever a time when traffic wasn't bad along Los Feliz Boulevard? In 1915, the main argument was making the traffic better by paving Hillhurst. Yes, Hillhurst was still dirt. Gower was truly a gulch, where the cowboys and farm hands hung out. That people walked, rode the public transportation, rode on occasional a car, or rode a horse. Los Feliz was still farm fields. Best case scenario of 2016, traffic is no longer a problem because people use a vastly improved mass transit system.

~ Dennis Chew, City Services Committee

Here are some happy endings that Sugar Kowalski would have loved. But if "nobody's perfect," city growth without intelligent oversight and advocacy is the worst possibility of all. Ten years from now, the LFIA will still be hard at work to make our best future a reality.

'I Was There'

By Norman Mennes



I always thought it was nice that the Los Feliz Improvement Association was started on my birthday in 1916. Of course, I didn't know about the organization until I was quite mature, and my wife and I settled on North Commonwealth Avenue.

However, some of my memories of Los Feliz go back quite a few decades. I used to drive east on Los Feliz past the flower farms to somehow connect with Colorado Boulevard to go to my school, the Pasadena Playhouse. There were no houses along the northside of Los Feliz then, just beautiful flowers and a few little stands selling them.

Lucky me; I was a joy to my teachers – a bouquet worked wonders.

And then there was breakfast at a little open air stand named the Tam O'Shanter. Now it's quite grown up, and so am I. There wasn't a freeway, so I drove over the Los Angeles River past promising little towns called Glendale and Eagle Rock. But, back to the river – no concrete banks then, only huge controversial billboards advertising real estate. After much infighting by Man about the billboards, Nature had its own amusing part to play. The maturing deodar trees now blocked the signs from the cars speeding by at the strict speed limit of 45 miles per hour. *(I must report that gasoline was 16 and 19¢ a gallon.)*

Being a theater student, I was always interested in the Greek Theatre dedicated in 1930 and operated for years by James Doolittle. He presented classical programs that included opera, ballet, symphony orchestras, and solo performers.

He provided most of the scenery which he stored at the theater. When he retired in 1975, he gave the scenery to the LACC Theatre Academy. By then, I was chairman of the Academy.

Close to the Greek Theatre was the Brown Derby, a lovely restaurant on the corner of Hillhurst and Los Feliz. It was a class act. It was patronized by movie stars, movie executives, and creative cinema technicians. I qualified because of my wife, author and producer Muriel Roy Bolton who was working at Paramount on "The Millionaire" series. I met her for lunch at the Derby almost daily. She knew all the actors and most of the technicians so our table became a round-table. It was a great time in my life.

If all of the above sounds like history, I can report it isn't. I was there!



Sicilian Cuisine
Lasagna • Veal • Spaghetti • Pizza • Fettucini

Party Trays Available

L O S F E L I Z

Hours: Open 11:00 a.m. daily. Closed Tuesday.

1858 N. Vermont Avenue • Los Angeles, CA 90027
(323) 663-1178 • 663-1430 • FAX (323) 660-0284



photo top – John Marshall High School campus, circa 1932.
 photo right – Mrs. Palfrey's Literary Club at Marshall High School, 1940. Pictured with fellow students is the future Miss America and actress, Rosemary LaPlanche. She was crowned Miss America in 1941.

John Marshall High School Celebrates 75 Years

by Joanna Erdos/JMHS Alumni Association Vice President/Faculty Liaison

John Marshall High School opened on January 26, 1931, as a six-year high school (7-12) with approximately 1,100 students and 48 teachers.

The school was named after Chief Justice John Marshall. Joseph Sniffen, for whom the auditorium is named, served as the first principal. The first class to graduate from Marshall was the class of Summer 1932.

During the first semester of Marshall's existence the faculty and students cooperatively selected the school motto, seal, and colors.

The school motto, "Veritas Vincit-Truth Conquers," was an easy choice since this was a favorite sentiment of John Marshall. Two shades of blue, symbolic of truth, became the official colors of John Marshall High School – the moonlit blue of midnight and the sunlit

blue of dawn. The lyrics of the Alma Mater were composed by Marshall students John Montapert and Henry Suyukida (class of '39). Mascot Johnny Barrister was designed by a student in 1945.

Following the major earthquake in 1971 Marshall's main buildings were condemned. The Cafeteria/Home Economics building was so badly damaged that it had to be demolished immediately. In its place today is the grassy area called "The Mound." The Los Feliz community, led by "Citizens to Save Marshall," actively campaigned to save the unique Collegiate Gothic buildings from demolition. Four women, Sherrill Boller (class of '46), Alberta Burke (parent), Joanne Gabrielson, and Nina Mohi (class of '53) fought for five years to save the buildings. In 1975, the main building was closed for structural strengthening and offices and classes were moved to temporary bungalows. In 1977 reconstruction

of the main building and construction of the new cafeteria/science building began. In 1980 John Marshall High School was placed on the Recognized List of Historic Landmarks by the Los Angeles Cultural Heritage Board. Because of its spectacular Collegiate Gothic architecture, the school has been the background for many films and television shows.

In September of 1981 the refurbished main building and new science building with a library, media center, cafeteria, and science classrooms were opened. In February of 1993, an additional classroom building was opened with rooms for science, ESL, Math, Computers, and Health.

In 1994 Marshall became a three-track, year-round, four-year school to relieve overcrowding.

Today, Marshall's enrollment has increased to approximately 4,500

continued on next page

continued from previous page students and 225 faculty. The loyalty of Marshall graduates is evident in the number of alumni who have returned to the school as teachers and/or administrators. As of January 2003, there were 30 teachers and three administrators who are Barristers!

Among noted Marshall alumni are Superior Court Judge Lance Ito; 1941 Miss America Rosemary La Planche; actress Julie Newmar; pianist John Browning; 1997 NFL Hall of Famer Michael Haynes; Magic Johnson's physician, Dr. David Ho; L. A. County Supervisor Michael Antonovich; Judge Barnett Cooperman; and Admiral Carter Powell. Others who attended Marshall include Leonardo Di Caprio and Heidi Fleiss. John Paul DeJoria, the CEO of Paul Mitchell Systems hair care products and Michelle Phillips, of the The Mamas and the Papas, were caught talking in class by their business teacher (Mr. Wachs) and were told that if they didn't pay attention, they wouldn't amount to anything.

Marshall will be celebrating its 75th anniversary with a luncheon on Saturday, January 28, and a picnic and campus tour on Sunday the 29th.

For more information contact the Alumni Association at jmhsalumniassn@aol.com or call (323) 953-6542 or visit www.marshallhigh.com.

Annual Photo Day Set for Jan. 29

"It's a Trip Down Memory Lane"

The second annual Photo Day sponsored by LFIA to collect old photographs of Los Feliz through the ages will be held Sunday, Jan. 29, at Marshall High School, 3939 Tracy Street, from 10 a.m. to 2 p.m. in the school's cafeteria. The event is being held in conjunction with the 75th Anniversary celebration of the historic high school in Los Feliz.

"The LFIA History Committee was so thrilled with last year's Photo Day that we are going to hold another. And we thought it would be perfect to schedule it the same weekend as Marshall celebrates its anniversary," said LFIA history committee chair Marian Dodge and a former teacher at Marshall. Dodge said last year's photo-gathering event collected some 100 photographs "chronicling the growing neighborhood of Los Feliz through the residents' eyes."

"Our goal is to collect enough photographs to publish a pictorial history of Los Feliz. We've made a great start, but we need everyone's help in collecting many more photos," said Dodge, adding that the photos will all be donated to the Los Feliz Library.

"Marshall alumni have been wonderful contributors to our project, but you need not be a Marshall grad to participate. Everyone is invited to bring their photos," said Dodge. "We will ask you to tell us the story behind the photos - that's the fun part. We will make a digital copy of the photos while you wait so you don't have to give up your priceless photos. Although photos certainly may be donated."

Do You Know?

LFIA Seeks Historical Facts

Do you know how many people lived in Los Feliz in 1916?

Or do you know when Los Feliz Road became Los Feliz Boulevard and was paved?

LFIA's History Committee is seeking historical information in order to accurately document the history of the Los Feliz community.

If anyone has information on the history of the boulevard and/or knowledge about the population of Los Feliz during the early part of the 1900s, please e-mail Lynne T. Jewell of the LFIA History Committee at ltjewell@sbcglobal.net.



Courtesy of Immaculate Heart High School Archives

Can't make it on Jan. 29th? You can still participate. Mail your photos to LFIA History Committee, 2648 N. Commonwealth Ave., Los Angeles, CA 90027. Be sure to include as much information as possible about the photographs and your phone number or e-mail address so we can contact you in case we have questions.

"So start digging now for those precious photographs. Mine are stashed unceremoniously in shoe boxes in the bottom of the closet. Do you remember where yours are? Try the basement, the attic, and the closet in your den. Don't forget that old album of grandma's. This is a great rainy day project and will be a trip down memory lane. Share those memories with us and help us create a visual timeline of Los Feliz," said the historically-minded Dodge.

Questions? Please call Melissa Linn of the LFIA History Committee at (818) 409-1027.

Where City's Elite Met for Laughs and Fellowship By Don Snyder

Friendship Auditorium, the Shrine of Friendship. Did you ever wonder about the name or the origin of the building? In the early days of Los Angeles, before VCRs, tennis or even golf, the elite of L.A. spent much of their free time horseback riding through the acres of Griffith Park.

One such Angeleno, Maurice DeMond, had stables along Riverside Drive.

Next door, in a beautiful garden, he and a group of movers and shakers from the business and entertainment communities started the Los Angeles Breakfast Club.

The year was 1925 and in no time the organization reached international acclaim through the efforts of members such as Darryl F. Zanuck, Cecil B. De Mille, L.B. Mayer, and Edward Doheny. Will Rodgers and Irving Berlin were regular entertainers, Calvin Coolidge, newspaper moguls William Randolph Hearst and

Harry Chandler often shared the microphone. Amelia Earhart landed her plane in the L.A. River and hiked up to speak at the club.

Jack Warner made time for a weekly radio broadcast of the proceedings which lasted on air for over 26 years.

In 1937, they relocated to a grand clubhouse and stables on Los Feliz Boulevard., currently the site of Rancho Los Feliz apartments. They had a full time staff and became a social hub for area residents. It was here that many locals took Cotillion, had anniversary parties and wedding celebrations. And every Wednesday morning members such as Walt Disney, Jack Dempsey and Harold Lloyd would gather to hear Presidents speak and enjoy the best Opera and Pop entertainers of the day.

In 1967 the club moved to its current location, 3109 Riverside Drive, donated it to the city and negotiated a 50-year lease.



The tradition still continues. Drop by any Wednesday morning at 7 a.m. for some "Ham and Eggs", wonderful speakers and great entertainment.

Snyder, an accomplished musician, serves as the pianist for the Breakfast Club.

top photo: Leo Carillo, Johnny Weissmuller, Tom Mix (in cowboy hat), and Jackie Cooper (in front) posed with Dorothy Edwards, Queen of the Rose Tournament and eleven princesses at the Breakfast Club, on Nov. 2nd, 1932.

bottom photo: Mickey Mouse & Walt Disney at The Breakfast Club, Sept. 28, 1932.



Tess Nelson & Gary Bergevin

323.671.1200

tessandgary@prula.com

www.tessandgary.com



**Prudential
California Realty**

JOHN AAROE DIVISION

1714 Hillhurst Ave., Los Angeles, CA 90027



JUST LISTED

3751 Prestwick Dr.

Offered at \$1,199,000

- . 4 Bedrooms
- . 4.5 Baths
- . Spacious Den
- . High Ceilings
- . Lush Patios
- . Stunning Views



JUST SOLD

2329 East Live Oak Dr.

Offered at \$2,595,000

- . 3 Spacious Bedrooms
- . 3.5 Renovated Baths
- . Den/4th Bedroom
- . Garden House
- . Sparkling Pool/Spa
- . Large Lush Lot



JUST SOLD

4135 Cromwell Ave.

Offered at \$2,049,000

- . 5 Bedrooms
- . 3 Vintage Baths
- . Den
- . 2 Estate Lots
- . Lovely views
- . Needs TLC



JUST SOLD

2031 N. Alexandria

Offered at \$1,550,000

- . 4 Bedrooms
- . 3.5 Baths
- . Gourmet Kitchen
- . Spacious Family Room
- . Separate Office
- . Updated Systems

We don't just represent property, we represent you.

Take a virtual tour of these properties at our website: www.tessandgary.com

If your home is currently listed, please disregard this notice as it is not our intention to solicit other brokers' listings. Independently owned and operated.

Los Feliz Improvement Association

PHOTO DAY

Sunday, January 29, 2006, 10:00 a.m. – 2:00 p.m.

LOCATION

John Marshall High School Cafeteria • 3939 Tracy St.
Parking available off entrance of Griffith Park Blvd. near the football field.

SPONSORED BY

The Los Feliz Improvement Association History Committee,
The Los Feliz Public Library & The John Marshall High School Alumni
Association.

PHOTO MEMORIES

Be a Part of Los Feliz History

You, the long-time residents of Los Feliz, both past and present possess a treasure trove of photographic memories of our unique neighborhood. The History Committee of the Los Feliz Improvement Association, in cooperation with the Los Feliz Library, and John Marshall High School Alumni Association wish to ensure that these memories are preserved forever to be shared with future generations. We ask that you please bring your old family photographs of your home, family members, and neighborhood to the morning tour and picnic at Marshall High School on Sunday January 29, 2006. We would love to meet you and hear your stories. We will be able to copy your photos on site and return them to you while you wait. Please come and share your memories with us. We can't wait to see you and your photos!

If you have photos but are unable to attend, please call us. We will be more than happy to come to you. You may also donate your photographs to the Los Feliz History Committee. Please provide us with all the pertinent information about the photos and your phone number so that we can contact you.

You may mail your photos to:

Los Feliz Improvement Association History Committee
2648 N. Commonwealth Ave., Los Angeles, CA 90027

If you have any questions, please call:

Melissa A. Linn • LFIA History Committee Member (818) 409-1027 (office)

(right) N. Berendo Street, circa 1926

From left to right: Elizabeth Bartholomew, Catherine Roberts, Frances Bartholomew, Glen Roberts, Leona Monteleone, Marjorie Monteleone.

Photo courtesy of Marjorie Monteleone Romer

(far right) Griffith Park Observatory under construction in the 1930s

Photo courtesy of Miriam Pimental



TIRED OF THE PAIN? WANT TO FEEL BETTER?

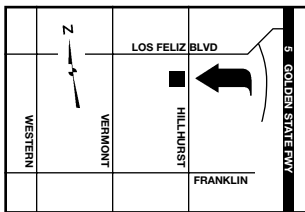


Are you sick or tired of being sick and tired?

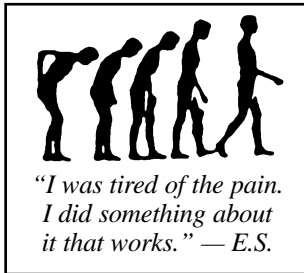
When you are ready to feel better, function better, worry less about how you feel and have more energy, call for a complimentary consultation!

Dr. Renée Davidson
Chiropractic

The local pain relief specialist.



2107 Hillhurst Ave. at Ambrose
Near Nature Mart
323.664.6003



2004-2005 Meliora Awards Nominations Being Accepted

Nominations are being accepted for the annual beautification Meliora Awards, sponsored by the Los Feliz Improvement. The deadline is Feb. 1.

Meliora (*meaning "make it better" in Latin*) competition goes to Los Feliz residents for their excellence in showcasing their property in an outstanding way, according to Patricia Ruben, the LFIA board member who oversees the awards. "Each year we get more and more submissions," she said. "One can nominate themselves or one of their Los Feliz neighbors."

Here are the categories for nominations:

- Best Single Family Restoration*
- Best Single-Family Renovation*
- Best Commercial or Public Space*
- Best Multi-Family Renovation*
- Best Front Garden*

The winners will be honored at the Autry National Center's Museum of the American West in the spring.

Please send your submissions to Patricia Ruben, LFIA 1801 N. Hillhurst Avenue, LA 90027. For further information, call (323) 671-2310.

Torch Runner

Which is brighter, the torch or the smile? Fire Station 35 honored Margret Lohfeld by selecting her to carry the torch for the first lap of the Hillhurst Avenue in the Fallen Firefighters Memorial Torch Relay. Lohfeld, who chairs the LFIA Beautification Committee, is a big supporter of the LAFD.



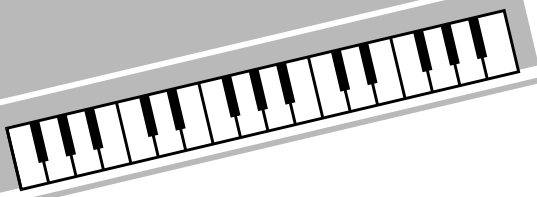
photo by Marian Dodge

IN LOS FELIZ...

Charles Shaffer

Teacher of Piano
& Organ

323.663.1079



Former Faculty Member:
Occidental College
California State University, Fullerton
California Institute of the Arts

FLW in Los Feliz

The celebrated Frank Lloyd Wright Hollywood House in Barnsdall Park is now open for public tours Wednesdays through Sundays 12:30, 1:30, 2:30 and 3:30 p.m. without appointments.

Cost is \$5 for the general public and \$3 for seniors and students.

FLW's Ennis House and Freeman House, also in Los Feliz, are currently undergoing renovation and are closed to tours.

To learn more about Wright, Photographer Carol Bishop will be speaking on "The Romantic Spirit of Frank Lloyd Wright" at the Los Feliz Library's Architecture & Beyond Lecture Series on Thurs., Feb. 16, from 6:45-7:45 p.m. This event is free to the public.

LaBonge Names New Field Deputy

Councilmember Tom LaBonge has named Patty Malone to serve as his new field deputy for the Los Feliz, Silver Lake and Griffith Park area.

Prior to joining CD4, Malone was a grant writer, business owner and worked in the entertainment industry. She is a resident of Silver Lake.



RETIRING RELOCATING or INVESTING?

Let us help you with the first step.....

KNOWING YOUR HOMES VALUE

Property values have appreciated 10-20% a year over the past several years. Would you like to know how much equity you have in your home? Call us for a free real estate evaluation of your home or for any real estate questions you may have.



ROSE WARE & TERRY CANFIELD

Estate & Architectural Directors

310.967.0540

WE MARKET YOUR HOME FOR ALL IT'S WORTH!



PACIFIC DESIGN CENTER

8687 MELROSE AVE, SUITE B110, LOS ANGELES, CA 90069

Independently owned & operated. The following properties have been listed and sold by multiple Real Estate Companies and agents. These updates are for informational purposes only. If your property is listed with another broker, this is not intended as a solicitation. Information has been accumulated from M.L.S., title companies and internal sources. No representations are made as to the accuracy of this information. XXXXXX



Happy New Year Greetings



**The Los Feliz
Real Estate Experts**

From

**MERRY PRESTIDGE
AND
MANVEL TABAKIAN**

We Don't Just List Property. We Sell Property!



2257 North Edgemont Street

Beautifully redone Country English, 4 bedrooms,
4 bathrooms, city views, lush grassy yard.

\$1,650,000

It takes extraordinary effort, dedication, talent and knowledge to be the best. When it's time to sell your home, team up with the best. With over 30 years combined experience, we offer the very best of what it takes to sell your home for top dollar!

**TWO MORE LOS FELIZ
PROPERTIES SOLD BY
MANVEL AND MERRY!**



2220 Richland Avenue

Streamlined 1960's mid-century architectural redone
to perfection. 3 bedrooms plus 1.75 designer baths.

\$1,101,000

Thinking of Selling?
*Call us for a complimentary
Market Evaluation of your home.*

MANVEL TABAKIAN & MERRY PRESTIDGE

Estates Directors • Architectural Specialist • Broker Associate • CRS • GRI • SRES

Direct: (323) 871-2337 or (323) 463-3674

Pager: (213) 508-0581

E-mail: mnmteam@aol.com

Visit our website at: www.merryandmanvel.com

**COLDWELL BANKER
PREVIEWS
*International***

1917 Hillhurst Avenue
Los Angeles, CA 90027

Information from sources deemed reliable but not guaranteed. NRT Incorporated is an Equal Opportunity Company. Equal Housing Opportunity. Coldwell Banker Residential Brokerage. Owned and Operated by NRT, Inc. © 2004, HRP Inc. Design by HRP Advertising (818) 785-7798. Unauthorized reproduction of artwork/images/photos strictly prohibited.

Le Val Lund

By Diane Kanner

Le Val Lund has lived for most of his life on South Lowry Road in a home his parent's built in 1925. His father, also Le Val, was a physician and his mother, Grace, was a homemaker who was active with the Los Feliz Women's Club when the organization's headquarters were located in the Breakfast Club, adjacent to the public pool at Los Feliz and Riverside.



photo top: the Lund home on South Lowry Road in 1925. photo left: Le Val and sister Ethel, Le Val's mother, Grace, and father, Le Val.

The younger Lund attended Franklin Avenue School, King Junior High and John Marshall High School, graduating with the class of 1941 before attending Occidental College. He left school to serve his country in World War II with the SeaBees. His sister Ethel was a JMHS graduate in the Summer Class of 1943.

Today Lund's profession as a consulting civil engineer takes him on round-the-world trips. His close association with such institutions as the Department of Water and Power, John Marshall High School, Greater Griffith Park Neighbor-

hood Council, and civic groups concerned with aviation, Griffith Park, and the Los Angeles River, makes Lund a very special resource for the Los Feliz community.

Over breakfast on Nov. 10, 2005 at Eatz restaurant, where he noted that the structure had been a Quonset hut in Rodger Young Village in Griffith Park in post war years, Lund reminisced about his early days in Los Feliz and at Marshall High School. He's on Marshall's planning committee for

terminal and field near San Fernando Road and Sonora and watch planes land.

There was so much open land around our home, improved land but vacant. Between our home and John Marshall there were many empty lots. I recall watching the school being built in 1931. We could see the ROTC training in drills from my front yard. Boyd Field, the football field, was not yet turf. It was just a field which was cultivated in the summer, mixed with sawdust, to keep it soft. When the newspapers covered the games, they called it 'Marshall's Potato field.' There were no bleachers. Spectators sat on a dirt bank or long picnic benches.

I belonged to Troop 517 at Marshall and my father was an assistant scoutmaster. My sister belonged to Campfire Girls at Franklin.

At Franklin, the school playground was covered with decomposed granite. I learned later, when we (DWP) put a pipeline along side of it, that it had been built on a dump. When I was a student, the pergola hadn't been built yet, so we sat in the sun eating our lunches. We would joke about the "Santa Monica bombers" (seagulls) who would swoop down and go for our sandwiches. There were 40 students in a class, five rows with eight seats in a row. During art, we would lean out the window and paint the construction of the Griffith Observatory.

When I think about Marshall High, one teacher comes to mind. Glen Donnelly was a scholar and a history teacher who taught in Room 151. When a custodian would appear in the courtyard outside the room, Mr. Donnelly would quip to the class, "If I asked that man how business is, he'd say 'it's picking up.'"

Portions of this interview are taken from a Nov. 15, 1993 oral history on tape, conducted by Cheryl Johnson for the LFIA History Committee. Kanner is author of the recently published book, "Wallace Neff and the Grand Houses of the Golden State."

the school's 75th anniversary celebration.

Q. What experience at Marshall made you decide to select civil engineering as a profession?

A. I didn't know what an engineer was when I was a kid but I knew I was interested in roads and bridges. For our entertainment my parents took my sister Ethel and me to the Glendale railroad station to watch trains arrive and depart. We would stop and buy popcorn on Los Feliz, near the Tam O'Shanter, on our way to the station. Other times, we drove to the side of the runway at Grand Central air



Falling leaves. Falling prices?

The Emerging 2006 Buyers' Market

The season has changed. It's certainly no longer summer. The sizzling market of nine months ago has cooled considerably, too. What this change means is that, for sellers, it may be "last call" for some time for relatively high sales prices. Don't expect multiple offers over the asking price--or quick sales. For realtors, the 2006 market will demand intensive, effective, consistent and expensive promotion plus astute market sense, keen negotiating skills and creative problem solving. The emerging market will not be for the neophyte or amateur. Everyone will need to keep wits--and pencils--sharpened. "Patience" may be the watchword of 2006.

Still, the last ten years have shown that the real estate market revives in January. In the past, buyers came back from their holidays and began spending serious money in the New Year. Whether this precedent will remain true in 2006 is anyone's guess. Hold on to your hat!

Richard Stanley
(323) 906-2417
#1 Agent - Los Feliz Office
www.richardstanleyrealtor.com



Nothing New Under the Los Feliz Sun

The Los Feliz Improvement Association, popularly referred to today as LFIA, was founded in 1916. It was first called the Vermont Canyon Improvement Association and changed to its current name in 1922.

As its original name implies, it was formed to protect issues relating to Vermont Canyon. Nine decades later, the nonprofit organization still battles over issues relating to preserving Griffith Park as well as other controversies in the community.

Today LFIA is the oldest homeowners association in Los Angeles. It started with 36 members in 1916 and currently has a membership of nearly 1400.

Dues were \$2 in 1922. They are \$30 today.

LFIA's geographic area encompasses Riverside Drive on the east to Canyon Drive on the west; from Griffith Park on the north to Franklin Avenue on the south.

Early on, Los Feliz Boulevard emerged as the focus for LFIA. It was committed to making the boulevard one of the most beautiful and exclusive streets to be found anywhere in America. Not all boulevard battles were won, but a big one against William Randolph Hearst prevented the newspaper publisher from putting up billboards in the 1930s.

The commitment to historically preserve the boulevard continues.

The latest issue: what to do about used cars for sale along the beautiful tree-lined boulevard.

"What's good for the boulevard is good for Los Feliz" has been at the core of community activism for the past 90 years.

~compiled by Lynne Jewell
& Marian Dodge



Living in Los Feliz is Wonderful!

Thank you Los Feliz Improvement Association
for keeping our neighborhood
green and beautiful!



chrislaib, realtor

Your Home. Your Investment. My Business.

323.671.1251

Member of the Berkshire-Hawthaway Family of Companies. Independently owned & operated. If your home is currently listed, please disregard this notice as it is not my intention to solicit other brokers' listings.

The Griffith Observatory is now slated to reopen in Fall, 2006

In April, 2003, the Observatory's foundation was revealed as digging on the front lawn for the new underground space began. This new area under the lawn will eventually house two new exhibit halls as well as the Leonard Nimoy Event Horizon theater.



Photos from www.griffithobservatory.org website.



The Astronomers Monument gleams in the sun, protected by a low barrier. Crews are grading the lawn area in preparation for the replacement of sidewalks. [Sept. 7, 2005]



Workers complete repairs to the floor, laying new tile as needed in the East Hall. The door to the right leads to the new southeast observation deck. [Nov. 17, 2005]



The W. M. Keck Foundation Central Rotunda is nearly restored, now that the pendulum is unboxed. [Nov. 17, 2005]

LOS FELIZ IMPROVEMENT ASSOCIATION NEWSLETTER

Los Feliz Observer

P.O. Box 29395, Los Angeles, CA 90029